

HOTEL BLOCK DISCOUNT + TRAVEL DETAILS + AIRPORTS
2024 WORLDLINK MEDICAL BHRT CME SERIES – PART I - IV
TORONTO, ON., CANADA

PART I: FRIDAY, APRIL 19th TO SUNDAY, APRIL 21st

**PART I: Mastering the Protocols for Optimization of
Hormone Replacement - Discover the Power of BHRT
Fundamentals**

COURSE SCHEDULE - LIVE CONFERENCE IN TORONTO - EST TIME

FRIDAY: 8:00am - 6:00pm
FRIDAY: 6:30pm - 8:00pm – Private cocktail onsite
SATURDAY: 8:00am - 6:00pm
SUNDAY: 8:00am - 12:00pm - Course is complete

FULL COURSE DETAILS

www.trubalancehealthcare.com/education

COURSE INCLUDES

- 1) *E-syllabus digital copy included - (print copy extra fee)*
- 2) *Medical references*
- 3) *CME credits*
- 4) *Online test*
- 5) *Breakfast & lunch onsite*
- 6) *Copper APIM membership on Worldlink Medical website - Free with PART I*

OPTIMAL AUDIENCE

Medical Doctor, Nurse Practitioner, Registered Nurse, Endocrinologist, Gynecologist, Registered Practical Nurse, Cardiologist, Physician's Assistant, International Medical Graduate, Naturopathic Doctor, Sports Doctor, Weight Loss Doctor, Medical Doctor in Residency, 4th Year Medical Students, Functional Medicine MDs, Doctor of Osteopathic Medicine, Radiologists or Urologist, etc.

**Education is open across borders to
medically licensed professionals**

WESTIN HARBOUR CASTLE HOTEL



WESTIN HARBOUR CASTLE HOTEL

1 Harbour Square
Toronto (lakefront), ON., M5J 1A6
Hotel is located across from Billy Bishop Airport for Porter Airlines, in the same harbour

Main Telephone: 416.869.1600

Hotel Room Rate: \$299.00CAD + taxes per night

Covid clean protocols in effect

- **Hotel Discount:** Expires March 21st or if the room block sells out first - NO EXCEPTIONS
- **Reservations Tel#:** 1.888.627.8559
- **Nearest Airport:** Toronto International Airport or Billy Bishop Toronto City Airport on the island downtown
- **Reservation Link:** [Website to register](#)

HOTEL WEBSITE: [Main website](#)

MAKE SURE YOU CHECK YOUR FLIGHTS 24 HOURS BEFORE YOU FLY

PART II: FRIDAY, JULY 12th TO SUNDAY, JULY 14th

PART II: Mastering the Protocols for Optimization of Hormone Replacement - Expand Treatment Options

COURSE SCHEDULE - LIVE CONFERENCE IN TORONTO - EST TIME

FRIDAY: 8:00am - 6:00pm
SATURDAY: 8:00am - 6:00pm
SUNDAY: 8:00am - 12:00pm - Course is complete

FULL COURSE DETAILS

www.trubalancehealthcare.com/education

COURSE INCLUDES

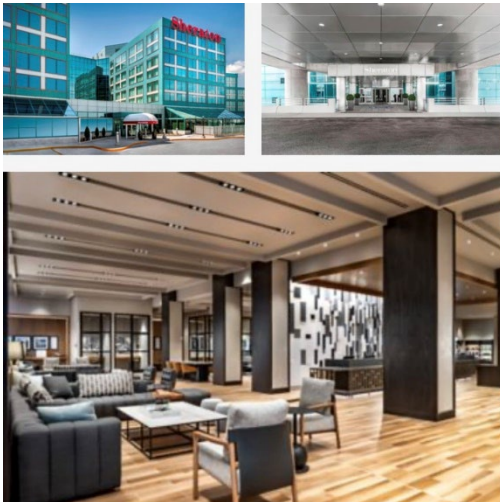
- 1) *E-syllabus digital copy included - (print copy extra fee)*
- 2) *Medical references*
- 3) *CME credits*
- 4) *Online test*
- 5) *Breakfast & lunch onsite*

OPTIMAL AUDIENCE

Medical Doctor, Nurse Practitioner, Registered Nurse, Endocrinologist, Gynecologist, Registered Practical Nurse, Cardiologist, Physician's Assistant, International Medical Graduate, Naturopathic Doctor, Sports Doctor, Weight Loss Doctor, Medical Doctor in Residency, 4th Year Medical Students, Functional Medicine MDs, Doctor of Osteopathic Medicine, Radiologists or Urologist, etc.

Education is open across borders

SHERATON GATEWAY HOTEL INSIDE THE TORONTO INTERNATIONAL AIRPORT HOTEL & TRAVEL DETAILS



SHERATON GATEWAY HOTEL INSIDE TORONTO PEARSON INTERNATIONAL AIRPORT

Terminal 3 Toronto Amf, Toronto, ON., L5P 1C4 (Enter by departures level/ramp)

Main Telephone: 905.672.7000

Hotel Room Rate: \$279.00CAD + taxes per night

Covid clean protocols in effect

Starbucks – Right across from the hotel inside the airport, across from arrival's

- **Hotel Discount:** Expires June 13th or if the room block sells out first - NO EXCEPTIONS
- **Reservations Tel#:** 1.888.627.7092
- **Nearest Airport:** Toronto International Airport or Billy Bishop Toronto City Airport on the island downtown

HOTEL WEBSITE: [Main website](#)

MAKE SURE YOU CHECK YOUR FLIGHTS 24 HOURS BEFORE YOU FLY

PART III: FRIDAY, OCTOBER 25th TO SUNDAY, OCTOBER 27th - COMING SOON

PART III: Mastering the Protocols for Optimization of Hormone Replacement - Solve Troubling Symptoms

COURSE SCHEDULE - LIVE CONFERENCE IN TORONTO - EST TIME

FRIDAY: 8:00am - 6:00pm
SATURDAY: 8:00am - 6:00pm
SUNDAY: 8:00am - 12:00pm - Course is complete

FULL COURSE DETAILS

www.trubalancehealthcare.com/education

COURSE INCLUDES

- 1) E-syllabus digital copy included - (print copy extra fee)
- 2) Medical references
- 3) CME credits
- 4) Online test
- 5) Breakfast & lunch onsite

OPTIMAL AUDIENCE

Medical Doctor, Nurse Practitioner, Registered Nurse, Endocrinologist, Gynecologist, Registered Practical Nurse, Cardiologist, Physician's Assistant, International Medical Graduate, Naturopathic Doctor, Sports Doctor, Weight Loss Doctor, Medical Doctor in Residency, 4th Year Medical Students, Functional Medicine MDs, Doctor of Osteopathic Medicine, Radiologists or Urologist, etc.

Education is open across borders

SHERATON GATEWAY HOTEL INSIDE THE TORONTO INTERNATIONAL AIRPORT



SHERATON GATEWAY HOTEL INSIDE THE TORONTO PEARSON INTERNATIONAL AIRPORT

Terminal 3 Toronto Amf, Toronto, ON., L5P 1C4 (Enter by departures level/ramp)

Direct elevator from parking area into the hotel main lobby

Main Telephone: 905.672.7000

Hotel Room Rate: \$299.00CAD + taxes per night

Covid clean protocols in effect

Starbucks – Right across from the hotel in the airport

- **Hotel Discount:** Expires September 24th or if the room block sells out first - NO EXCEPTIONS
- **Reservations Tel#:** 1.888.627.7092
- **Nearest Airport:** Toronto International Airport or Billy Bishop Toronto City Airport on the island downtown

HOTEL WEBSITE: [Main website](#)

MAKE SURE YOU CHECK YOUR FLIGHTS 24 HOURS BEFORE YOU FLY

FOR ALL COMMUNICATION & REGISTRATION, PLEASE CONTACT:

Donna A.G. Kingman | Director of Business Development & Communications

International Cell: 647.884.0663 (send text or call)

Email: donna@trubalancehealthcare.com